



# *Unleashing Excellence: The Journey from Good to Great Business Analyst*

---

- Malini Jayaganesh and Arvind Arcot



Unleashing Excellence



# Delivery Efficiency and Excellence

## Solution Architects

Consumes requirements to consider solution options

## Design

Needs requirements to design solution

## Developers

Need to know what to deliver

## Product Owners

Needs requirements to solidify needs

## Project Managers

Needs requirements to evolve, schedule, budget & scope

## Quality Assurance

Need requirements to test against

## Change

Consumes requirements to design and deliver training

**Business Analysts**

**Requirements Management (WHAT)**

**Business Analysts**



# Expand knowledge and skills horizontally



Seek diverse experiences - Step outside your comfort zone!

Understand and integrate diverse perspectives

Cultivate learning agility

Shift from project mindset to consulting mindset



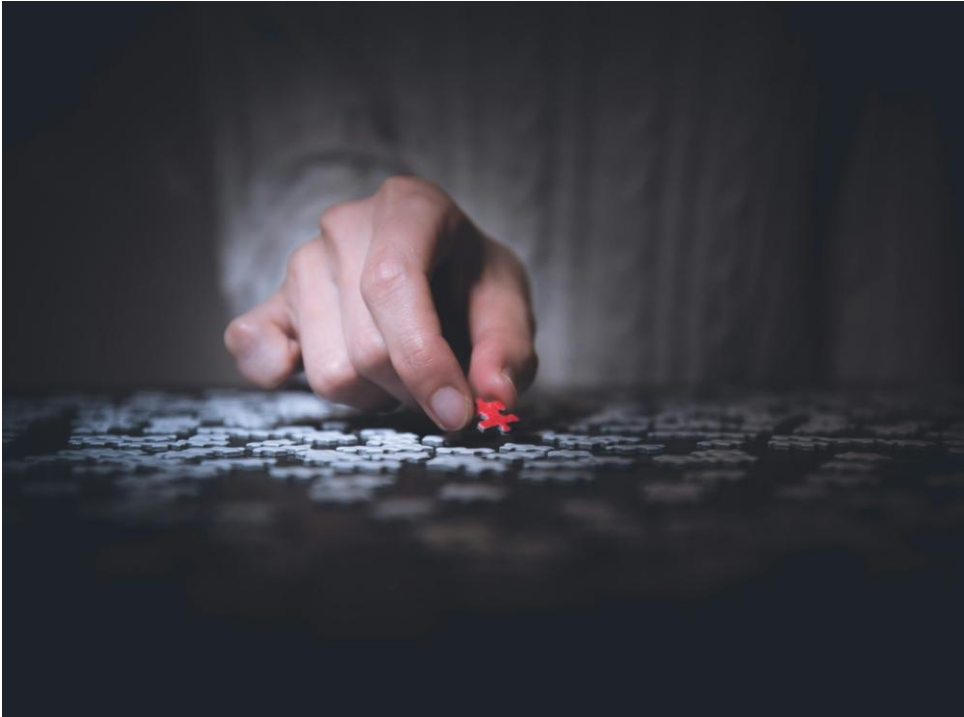
Generalist



Specialist



# Know your worth



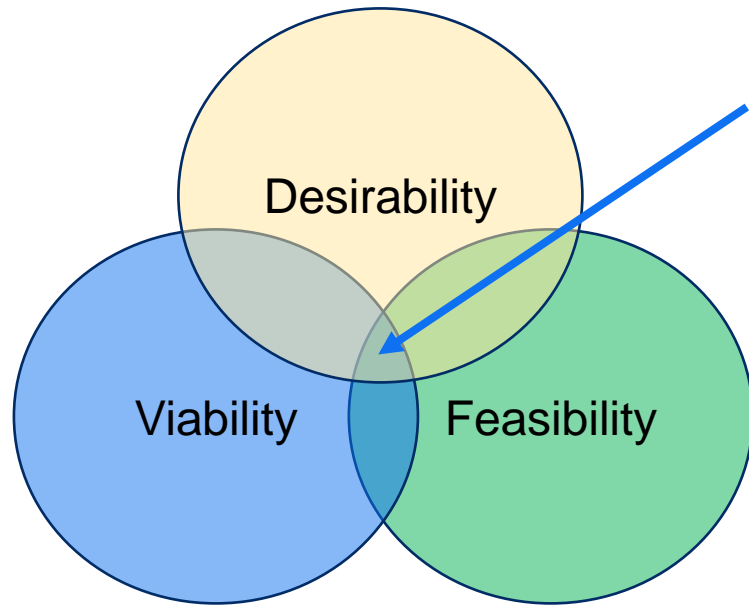
It is no longer enough to let your work do the talking!

Overcome inhibitions and learn to communicate your worth with confidence

Understand how you contribute to value



# Design Thinking – Customer centric thinking



**Innovation  
sweet spot**



Source: <https://www.ideo.com/blogs/inspiration/how-to-prototype-a-new-business>

Source: Business Analysts should be like good Baristas!, Esta Lessing, 2017

# Invest in your network



Network = Net worth!

Determine who needs to be in your network – Quality trumps Quantity!

Network with a generosity mindset

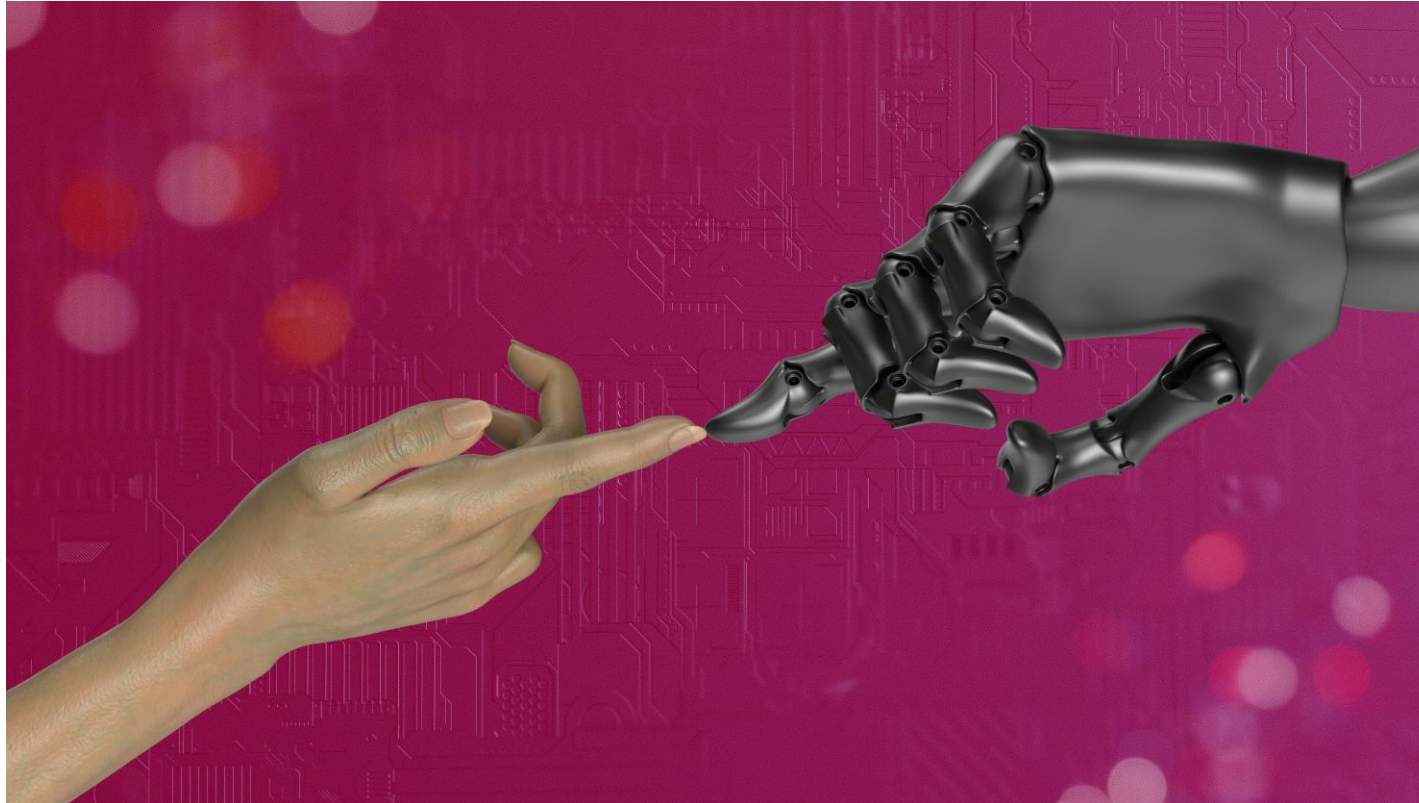


# Open to cutting edge technologies

User Stories

Acceptance Criteria

Test Cases



Initial Requirements

Non-Functional  
Requirements

Work Instructions

Photo by [Igor Omilaev](#) on [Unsplash](#)



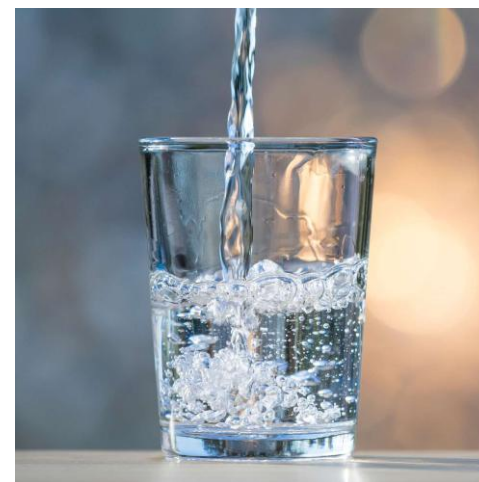




“Be like water making its way through cracks. Do not be assertive, but adjust to the object, and you shall find a way around or through it. If nothing within you stays rigid, outward things will disclose themselves.

Empty your mind, be formless. Shapeless, like water. If you put water into a cup, it becomes the cup. You put water into a bottle and it becomes the bottle. You put it in a teapot, it becomes the teapot. Now, water can flow or it can crash. Be water, my friend.”

– Bruce Lee



# A Gift for you - 20% off virtual courses till June 25

ITSM Hub, leading provider of globally-recognised certification courses



View course offerings and schedule

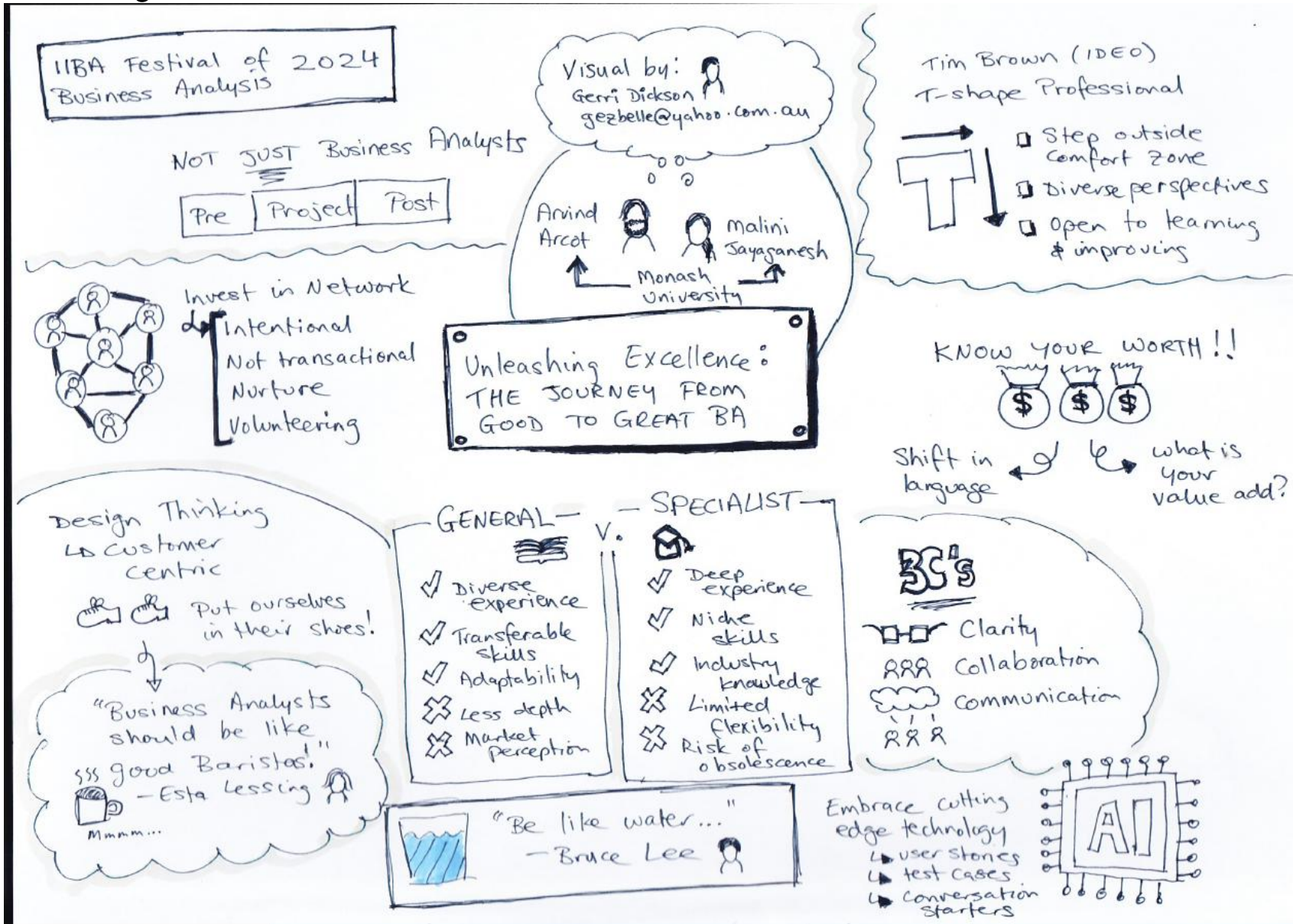
Promo code **FOBA2024**



And more ...

Valid till 30 June 2025 (conditions apply).

# Summary




# How to get in touch?



**Arvind Arcot**  
Experienced delivery professional and People Leader | Board Director at IIBA Australia



*thank you*



**Malini Jayaganesh**  
I believe in our collective ability to make a positive difference ...

